

FRAMELESS GLASS BALUSTRADE TYPES

FRAMELESS GLASS FIXING OPTIONS



SIDE MOUNTED



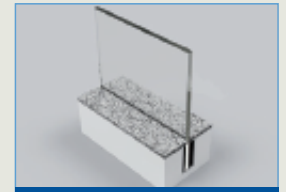
ROUND FLOOR
MOUNTED



SQUARE FLOOR
MOUNTED



TOP MOUNTED POLISHED
CHANNEL



SLOTTED INTO
FLOOR

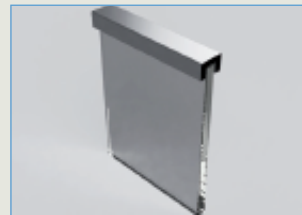
FRAMELESS GLASS HANDRAIL OPTIONS



ROUND HANDRAIL ON
OFFSET BRACKET



SQUARE RECESSED
HANDRAIL WITH RUBBER
INSERT 20MM X 25MM



SQUARE RECESSED
HANDRAIL
25MM X 25MM



ROUND RECESSED
HANDRIAL
25MM Ø

- Engineering calculations show that all balustrades that are frameless requires a minimum of 12mm and up to possibly 20mm thick toughened safety glass dependent on occupancy classification.
- A Handrail is compulsory in the event that frameless glass is not fixed in a permanent concrete or steel channel.
- In line with structural engineers calculations and SANS 10160 loading requirements, all balustrades will be designed to comply with the relevant occupation categories as outlined in SANS 10160 eg. 1kN/m, 1.5kN/m and 3kN/m etc.
- All custom balustrade systems are designed and tested in consultation with a professional structural engineer and in accordance with SANS, deemed to satisfy requirements.
- All glass balustrades shall withstand a 400 Joule soft body impact test.

